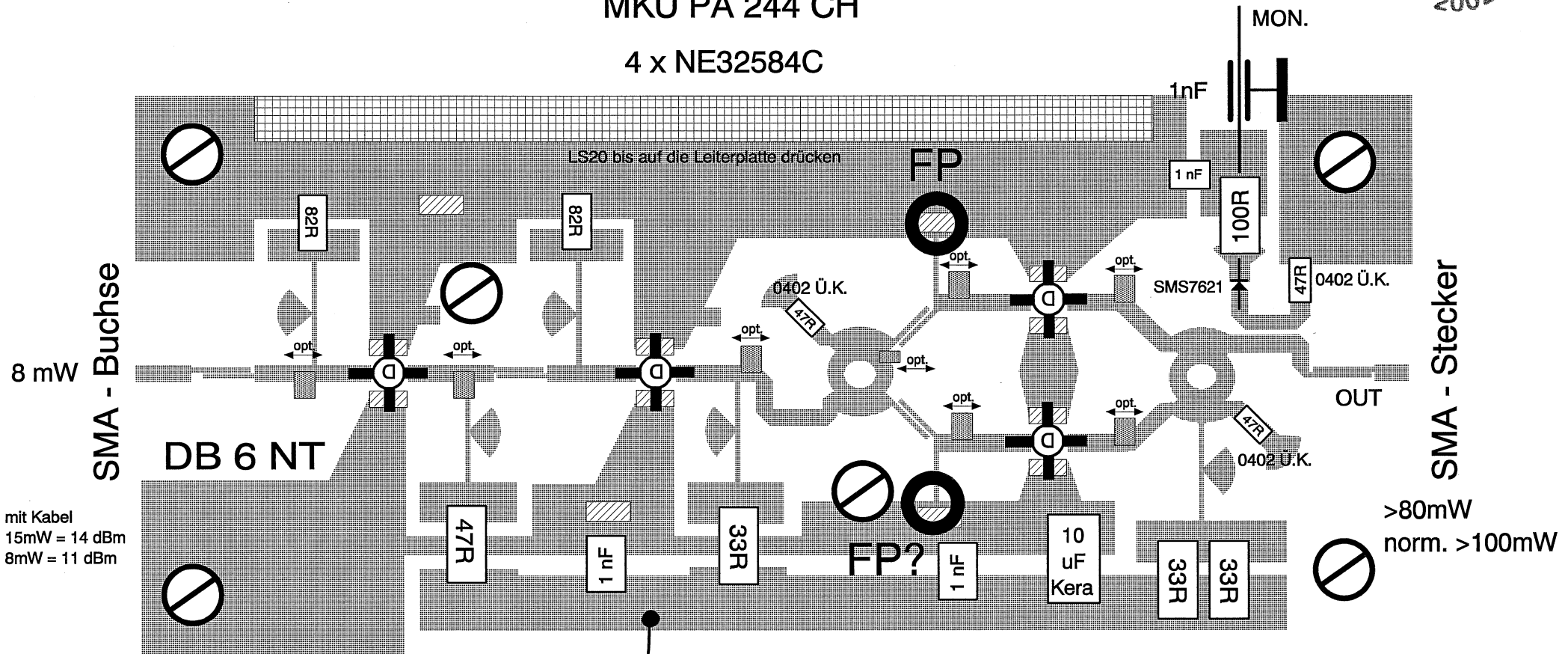


K - BAND LOW-NOISE-POWER AMPLIFIER DB 6 NT 01.2009

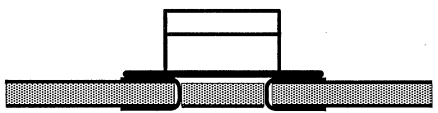


MKU PA 244 CH
4 x NE32584C

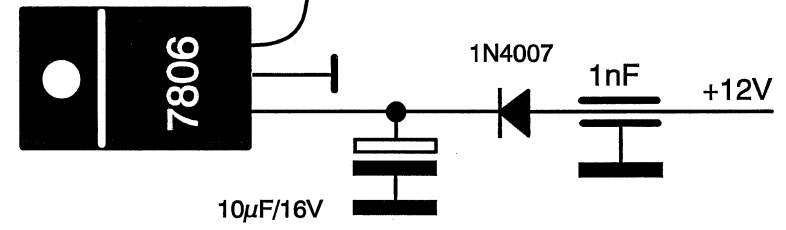


mit Kabel
15mW = 14 dBm
8mW = 11 dBm

>80mW
norm. >100mW



Durchkontaktierungen unter den FET's



LS 28 Auch im Deckel

⊗ Durchkontaktierungen